

**INTERSECTION: Mountain & Verdugo**

Group Assignment: NONE

Field Master Assignment: NONE

System Reference Number: 1

N/S Street Name: Verdugo Rd

E/W Street Name: Mountain

Intersection Number: 139

Timing by: KV  
 Implemented by: BZ  
 Supersedes timing: 10-17-07

Date: 2-25-08  
 Date: 2-26-08

Note:  
 \_\_\_\_\_  
 \_\_\_\_\_

|                 |       |           |
|-----------------|-------|-----------|
| Drop Number     | 9     | <C/0+0+0> |
| Zone Number     | 9     | <C/0+0+1> |
| Area Number     | 4     | <C/0+0+2> |
| Area Address    | 17    | <C/0+0+3> |
| QuicNet Channel | COM29 | (QuicNet) |

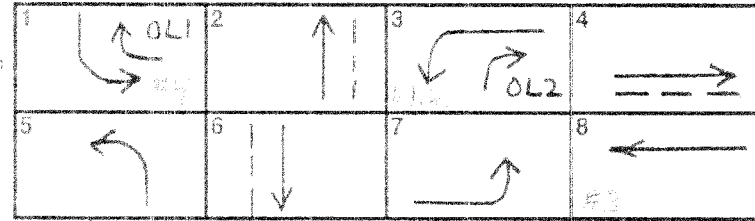
**Communication Addresses**

|               |   |           |
|---------------|---|-----------|
| Manual Plan   | 0 | <C/0+A+1> |
| Manual Offset | 0 | <C/0+B+1> |

**Manual Selection**

Manual Plan  
 0 = Automatic  
 1-9 = Plan 1-9  
 14 = Free  
 15 = Flash

Manual Offset  
 0 = Automatic  
 1 = Offset A  
 2 = Offset B  
 3 = Offset C



\* Protected/Permissive Left Turn Operation

|               |     |           |
|---------------|-----|-----------|
| Flash Start   | 0   | <F/1+0+E> |
| Red Revert    | 2.0 | <F/1+0+F> |
| All Red Start | 6.0 | <F/1+C+0> |

**Start / Revert Times**

|                |     |           |
|----------------|-----|-----------|
| Exclusive Walk | 0   | <F/1+0+0> |
| Exclusive FDW  | 0   | <F/1+0+1> |
| All Red Clear  | 0.0 | <F/1+0+2> |

**Exclusive Ped Phase**

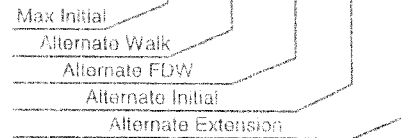
(Outputs specified in Assignable  
 Outputs at E/127+A+E & F)



| Flow | Phase Names       | Phase |     |     |     |     |     |     |     |
|------|-------------------|-------|-----|-----|-----|-----|-----|-----|-----|
|      |                   | 1     | 2   | 3   | 4   | 5   | 6   | 7   | 8   |
| 0    | Ped Walk          | 0     | 7   | 0   | 7   | 0   | 7   | 0   | 0   |
| 1    | Ped FDW           | 0     | 21  | 0   | 22  | 0   | 17  | 0   | 0   |
| 2    | Min Green         | 4     | 10  | 4   | 6   | 4   | 10  | 4   | 6   |
| 3    | Type 3 Disconnect | 0     | 0   | 0   | 0   | 0   | 0   | 0   | 0   |
| 4    | Added per Vehicle | 0.0   | 2.0 | 0.0 | 2.0 | 0.0 | 2.0 | 0.0 | 2.0 |
| 5    | Veh Extension     | 2.0   | 5.0 | 2.0 | 5.0 | 2.0 | 5.0 | 2.0 | 5.0 |
| 6    | Max Gap           | 2.0   | 5.8 | 2.0 | 5.8 | 2.0 | 5.8 | 2.0 | 5.8 |
| 7    | Min Gap           | 2.0   | 4.0 | 2.0 | 4.0 | 2.0 | 4.0 | 2.0 | 4.0 |
| 8    | Max Limit         | 15    | 30  | 15  | 25  | 15  | 30  | 15  | 35  |
| 9    | Max Limit 2       | 26    | 0   | 0   | 0   | 10  | 40  | 0   | 0   |
| A    | Adv. / Delay Walk | 0     | 0   | 0   | 0   | 0   | 0   | 0   | 0   |
| B    | Premt ped clear   | 0     | 21  | 0   | 22  | 0   | 17  | 0   | 0   |
| C    | Cond Serv Check   | 0     | 0   | 0   | 0   | 0   | 0   | 0   | 0   |
| D    | Reduce Every      | 0.0   | 0.8 | 0.0 | 0.8 | 0.0 | 0.8 | 0.0 | 0.8 |
| E    | Yellow Change     | 3.5   | 4.3 | 3.5 | 4.0 | 3.5 | 4.3 | 3.5 | 4.0 |
| F    | Red Clear         | 1.0   | 1.0 | 1.0 | 1.5 | 1.0 | 1.0 | 1.0 | 1.5 |

**Phase Timing - Bank 1** <C+0+F=1>

|         | B  | A | B | C | D   |
|---------|----|---|---|---|-----|
| Phase 1 | 0  | 0 | 0 | 0 | 0.0 |
| Phase 2 | 20 | 0 | 0 | 0 | 0.0 |
| Phase 3 | 0  | 0 | 0 | 0 | 0.0 |
| Phase 4 | 20 | 0 | 0 | 0 | 0.0 |
| Phase 5 | 0  | 0 | 0 | 0 | 0.0 |
| Phase 6 | 20 | 0 | 0 | 0 | 0.0 |
| Phase 7 | 0  | 0 | 0 | 0 | 0.0 |
| Phase 8 | 20 | 0 | 0 | 0 | 0.0 |



**Alternate Timing** <C+0+F=1>

|               | E   |
|---------------|-----|
| RR-1 Delay    | 0   |
| RR-1 Clear    | 0   |
| EV-A Delay    | 0   |
| EV-A Clear    | 0   |
| EV-B Delay    | 0   |
| EV-B Clear    | 4   |
| EV-C Delay    | 0   |
| EV-C Clear    | 0   |
| EV-D Delay    | 0   |
| EV-D Clear    | 4   |
| RR-2 Delay    | 0   |
| RR-2 Clear    | 0   |
| View EV Delay | --- |
| View EV Clear | --- |
| View RR Delay | --- |
| View RR Clear | --- |

**Preempt Timing**

|                 | F        | Flow |
|-----------------|----------|------|
| Permit          | 12345678 | 0    |
| Red Lock        | _____    | 1    |
| Yellow Lock     | _____    | 2    |
| Min Recall      | 2 6      | 3    |
| Ped Recall      | _____    | 4    |
| View Set Peds   | 2 4 6    | 5    |
| Rest In Walk    | _____    | 6    |
| Red Rest        | _____    | 7    |
| Dual Entry      | _____    | 8    |
| Max Recall      | _____    | 9    |
| Soft Recall     | _____    | A    |
| Max 2           | _____    | B    |
| Cond. Service   | _____    | C    |
| Man Cntrl Calls | _____    | D    |
| Yellow Start    | _____    | E    |
| First Phases    | 2 6      | F    |

**Phase Functions** <C+0+F=1>

I HEREBY CERTIFY THAT THIS IS A TRUE AND CORRECT COPY OF RECORDS ON FILE IN THE TRAFFIC SECTION OF THE CITY OF GLENDALE.  
2-26-08  
 Date Traffic & Trans. Admin.

**INTERSECTION: Broadway & Glendale**

Group Assignment: NONE  
 Field Master Assignment: NONE  
 System Reference Number: 26

N/S Street Name: Glendale  
 E/W Street Name: Broadway  
 Intersection Number: 28

Timing by: KV  
 Implemented by: KV  
 Supersedes timing: 10-15-07

Date: 7-21-08  
 Date: 2-21-08

Note: \_\_\_\_\_  
 \_\_\_\_\_  
 \_\_\_\_\_

|                 |       |           |
|-----------------|-------|-----------|
| Drop Number     | 9     | <C/0+0+0> |
| Zone Number     | 9     | <C/0+0+1> |
| Area Number     | 0     | <C/0+0+2> |
| Area Address    | 16    | <C/0+0+3> |
| QuicNet Channel | COM13 | (QuicNet) |

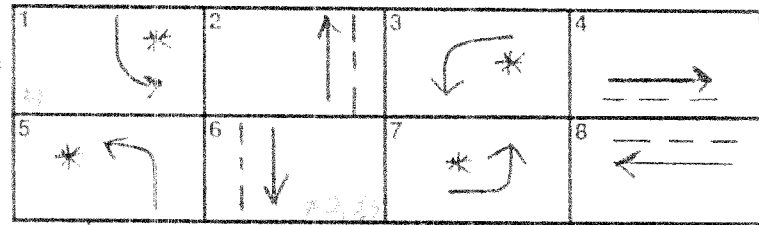
|               |   |           |
|---------------|---|-----------|
| Manual Plan   | 0 | <C/0+A-1> |
| Manual Offset | 0 | <C/0+B-1> |

**Communication Addresses**

**Manual Selection**

Manual Plan  
 0 = Automatic  
 1-9 = Plan 1-9  
 14 = Free  
 15 = Flash

Manual Offset  
 0 = Automatic  
 1 = Offset A  
 2 = Offset B  
 3 = Offset C



\* Protected/Permissive Left Turn Operation



|               |     |           |
|---------------|-----|-----------|
| Flash Start   | 0   | <F/1+0+E> |
| Red Revert    | 2.0 | <F/1+0+F> |
| All Red Start | 6.0 | <F/1+C+0> |

**Start / Revert Times**

|                |     |           |
|----------------|-----|-----------|
| Exclusive Walk | 0   | <F/1+0+0> |
| Exclusive FDW  | 0   | <F/1+0+1> |
| All Red Clear  | 0.0 | <F/1+0+2> |

**Exclusive Ped Phase**  
 (Outputs specified in Assignable  
 Outputs at E/127+A+E & F)

| Row | Phase Names ----> | Phase |     |     |     |     |     |     |     |
|-----|-------------------|-------|-----|-----|-----|-----|-----|-----|-----|
|     |                   | 1     | 2   | 3   | 4   | 5   | 6   | 7   | 8   |
| 0   | Ped Walk          | 0     | 7   | 0   | 7   | 0   | 7   | 0   | 7   |
| 1   | Ped FDW           | 0     | 12  | 0   | 18  | 0   | 14  | 0   | 17  |
| 2   | Min Green         | 2     | 7   | 2   | 7   | 2   | 7   | 2   | 7   |
| 3   | Type 3 Disconnect | 0     | 0   | 0   | 0   | 0   | 0   | 0   | 0   |
| 4   | Added per Vehicle | 0.0   | 1.5 | 0.0 | 1.5 | 0.0 | 1.5 | 0.0 | 1.5 |
| 5   | Veh Extension     | 3.0   | 4.0 | 3.0 | 5.0 | 3.0 | 4.0 | 3.0 | 5.0 |
| 6   | Max Gap           | 3.0   | 5.0 | 3.0 | 6.0 | 3.0 | 5.0 | 3.0 | 6.0 |
| 7   | Min Gap           | 3.0   | 3.0 | 3.0 | 4.0 | 3.0 | 3.0 | 3.0 | 4.0 |
| 8   | Max Limit         | 10    | 30  | 10  | 25  | 10  | 30  | 10  | 25  |
| 9   | Max Limit 2       | 0     | 0   | 0   | 0   | 0   | 0   | 0   | 0   |
| A   | Adv. / Delay Walk | 0     | 0   | 0   | 0   | 0   | 0   | 0   | 0   |
| B   | Premt ped clear   | 0     | 12  | 0   | 18  | 0   | 14  | 0   | 17  |
| C   | Cond Serv Check   | 0     | 0   | 0   | 0   | 0   | 0   | 0   | 0   |
| D   | Reduce Every      | 0.0   | 1.0 | 0.0 | 1.0 | 0.0 | 1.0 | 0.0 | 1.0 |
| E   | Yellow Change     | 3.5   | 3.6 | 3.5 | 3.9 | 3.5 | 3.6 | 3.5 | 3.9 |
| F   | Red Clear         | 1.0   | 1.0 | 1.0 | 1.0 | 1.0 | 1.0 | 1.0 | 1.0 |

**Phase Timing - Bank 1** <C+0+F=1>

|                     | 9  | A | B | C | D   |
|---------------------|----|---|---|---|-----|
| Phase 1             | 0  | 0 | 0 | 0 | 0.0 |
| Phase 2             | 20 | 0 | 0 | 0 | 0.0 |
| Phase 3             | 0  | 0 | 0 | 0 | 0.0 |
| Phase 4             | 20 | 0 | 0 | 0 | 0.0 |
| Phase 5             | 0  | 0 | 0 | 0 | 0.0 |
| Phase 6             | 20 | 0 | 0 | 0 | 0.0 |
| Phase 7             | 0  | 0 | 0 | 0 | 0.0 |
| Phase 8             | 20 | 0 | 0 | 0 | 0.0 |
| Max Initial         |    |   |   |   |     |
| Alternate Walk      |    |   |   |   |     |
| Alternate FDW       |    |   |   |   |     |
| Alternate Initial   |    |   |   |   |     |
| Alternate Extension |    |   |   |   |     |

**Alternate Timing** <C+0+F=1>

|               | E   |
|---------------|-----|
| RR-1 Delay    | 0   |
| RR-1 Clear    | 0   |
| EV-A Delay    | 0   |
| EV-A Clear    | 0   |
| EV-B Delay    | 0   |
| EV-B Clear    | 0   |
| EV-C Delay    | 0   |
| EV-C Clear    | 0   |
| EV-D Delay    | 0   |
| EV-D Clear    | 0   |
| RR-2 Delay    | 0   |
| RR-2 Clear    | 0   |
| View EV Delay | --- |
| View EV Clear | --- |
| View RR Delay | --- |
| View RR Clear | --- |

**Preempt Timing**

|                 | F        | Row |
|-----------------|----------|-----|
| Permit          | 12345678 | 0   |
| Red Lock        |          | 1   |
| Yellow Lock     |          | 2   |
| Min Recall      | 2 4 6 8  | 3   |
| Ped Recall      |          | 4   |
| View Set Peds   | 2 4 6    | 5   |
| Rest In Walk    |          | 6   |
| Red Rest        |          | 7   |
| Dual Entry      |          | 8   |
| Max Recall      |          | 9   |
| Soft Recall     |          | A   |
| Max 2           |          | B   |
| Cond. Service   |          | C   |
| Man Cntrl Calls |          | D   |
| Yellow Start    |          | E   |
| First Phases    | 2 6      | F   |

**Phase Functions** <C+0+F=1>

I HEREBY CERTIFY THAT THIS IS A TRUE AND CORRECT COPY OF RECORDS ON FILE IN THE TRAFFIC SECTION OF THE CITY OF GLENDALE.  
 7-26-08  
 Date Traffic & Trans. Admin.

INTERSECTION: Colorado & Pacific

Group Assignment: NONE

Field Master Assignment: NONE

System Reference Number: 92

N/S Street Name: Pacific Ave

E/W Street Name: Colorado

Intersection Number: 78

Timing by: KV  
 Implemented by: QA  
 Supersedes timing: 10-17-07

Date: 2-25-08  
 Date: 2-26-08

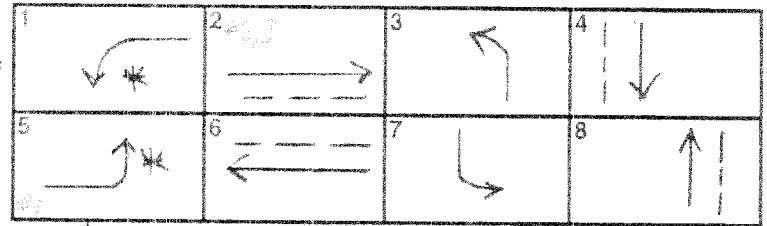
Note:  
 \_\_\_\_\_  
 \_\_\_\_\_

|                 |        |           |
|-----------------|--------|-----------|
| Drop Number     | 1      | <C/0+0+0> |
| Zone Number     | 1      | <C/0+0+1> |
| Area Number     | 2      | <C/0+0+2> |
| Area Address    | 21     | <C/0+0+3> |
| QuicNet Channel | COM15: | (QuicNet) |

|               |   |           |
|---------------|---|-----------|
| Manual Plan   | 0 | <C/0+A=1> |
| Manual Offset | 0 | <C/0+B=1> |

Communication Addresses

Manual Selection



\* Protected/Permissive Left Turn Operation

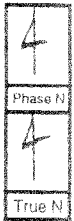
|               |     |           |
|---------------|-----|-----------|
| Flash Start   | 0   | <F/1+0+E> |
| Red Revert    | 2.0 | <F/1+0+F> |
| All Red Start | 6.0 | <F/1+C+0> |

Start / Revert Times

|                |     |           |
|----------------|-----|-----------|
| Exclusive Walk | 0   | <F/1+0+0> |
| Exclusive FDW  | 0   | <F/1+0+1> |
| All Red Clear  | 0.0 | <F/1+0+2> |

Exclusive Ped Phase

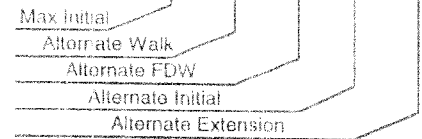
(Outputs specified in Assignable  
 Outputs at E/127+A+E & F)



| Row | Phase Names ----> | Phase |     |     |     |     |     |     |     |
|-----|-------------------|-------|-----|-----|-----|-----|-----|-----|-----|
|     |                   | 1     | 2   | 3   | 4   | 5   | 6   | 7   | 8   |
| 0   | Ped Walk          | 0     | 12  | 0   | 7   | 0   | 7   | 0   | 7   |
| 1   | Ped FDW           | 0     | 8   | 0   | 12  | 0   | 15  | 0   | 12  |
| 2   | Min Green         | 2     | 7   | 2   | 7   | 2   | 7   | 2   | 7   |
| 3   | Type 3 Disconnect | 0     | 0   | 0   | 0   | 0   | 0   | 0   | 0   |
| 4   | Added per Vehicle | 0.0   | 1.5 | 0.0 | 2.0 | 0.0 | 1.5 | 0.0 | 2.0 |
| 5   | Veh Extension     | 2.0   | 4.5 | 2.0 | 5.0 | 2.0 | 4.5 | 2.0 | 5.0 |
| 6   | Max Gap           | 2.0   | 6.0 | 2.0 | 6.0 | 2.0 | 6.0 | 2.0 | 6.0 |
| 7   | Min Gap           | 2.0   | 3.5 | 2.0 | 4.0 | 2.0 | 3.5 | 2.0 | 4.0 |
| 8   | Max Limit         | 10    | 30  | 12  | 22  | 10  | 30  | 12  | 22  |
| 9   | Max Limit 2       | 0     | 0   | 0   | 0   | 0   | 0   | 0   | 0   |
| A   | Adv. / Delay Walk | 0     | 0   | 0   | 0   | 0   | 0   | 0   | 0   |
| B   | Premt ped clear   | 0     | 8   | 0   | 12  | 0   | 15  | 0   | 12  |
| C   | Cond Serv Check   | 0     | 0   | 0   | 0   | 0   | 0   | 0   | 0   |
| D   | Reduce Every      | 0.0   | 1.0 | 0.0 | 1.0 | 0.0 | 1.0 | 0.0 | 1.0 |
| E   | Yellow Change     | 3.5   | 3.9 | 3.5 | 3.9 | 3.5 | 3.9 | 3.5 | 3.9 |
| F   | Red Clear         | 0.5   | 1.0 | 1.0 | 1.0 | 0.5 | 1.0 | 1.0 | 1.0 |

Phase Timing - Bank 1 <C+0+F=1>

|         | 9  | A | B | C | D   |
|---------|----|---|---|---|-----|
| Phase 1 | 0  | 0 | 0 | 0 | 0.0 |
| Phase 2 | 17 | 0 | 0 | 0 | 0.0 |
| Phase 3 | 0  | 0 | 0 | 0 | 0.0 |
| Phase 4 | 17 | 0 | 0 | 0 | 0.0 |
| Phase 5 | 0  | 0 | 0 | 0 | 0.0 |
| Phase 6 | 17 | 0 | 0 | 0 | 0.0 |
| Phase 7 | 0  | 0 | 0 | 0 | 0.0 |
| Phase 8 | 17 | 0 | 0 | 0 | 0.0 |



Alternate Timing <C+0+F=1>

|               | E   |
|---------------|-----|
| RR-1 Delay    | 0   |
| RR-1 Clear    | 0   |
| EV-A Delay    | 0   |
| EV-A Clear    | 0   |
| EV-B Delay    | 0   |
| EV-B Clear    | 0   |
| EV-C Delay    | 0   |
| EV-C Clear    | 0   |
| EV-D Delay    | 0   |
| EV-D Clear    | 0   |
| RR-2 Delay    | 0   |
| RR-2 Clear    | 0   |
| View EV Delay | --- |
| View EV Clear | --- |
| View RR Delay | --- |
| View RR Clear | --- |

Preempt Timing

|                 | F        |
|-----------------|----------|
| Permit          | 12345678 |
| Red Lock        | _____    |
| Yellow Lock     | _____    |
| Min Recall      | _____    |
| Ped Recall      | _____    |
| View Set Peds   | 2 4 6    |
| Rest in Walk    | _____    |
| Red Rest        | _____    |
| Dual Entry      | _____    |
| Max Recall      | _____    |
| Soft Recall     | _____    |
| Max 2           | _____    |
| Cond. Service   | _____    |
| Man Cntrl Calls | _____    |
| Yellow Start    | _____    |
| First Phases    | 2 6      |

Phase Functions <C+0+F=1>

I HEREBY CERTIFY THAT THIS IS A TRUE AND CORRECT COPY OF RECORDS ON FILE IN THE TRAFFIC SECTION OF THE CITY OF GLENDALE.  
 2-26-08  
 Date Traffic & Trans Admin