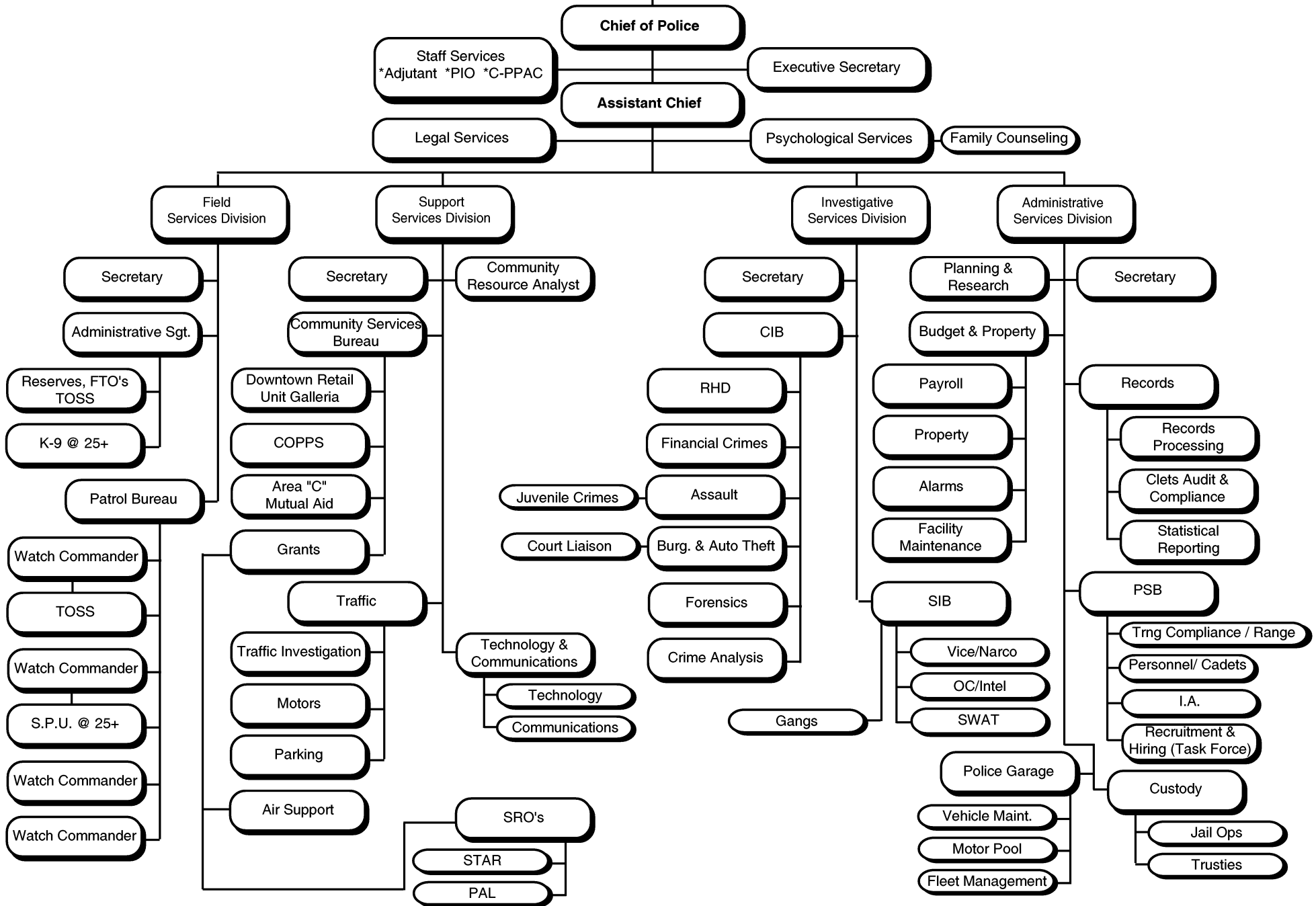
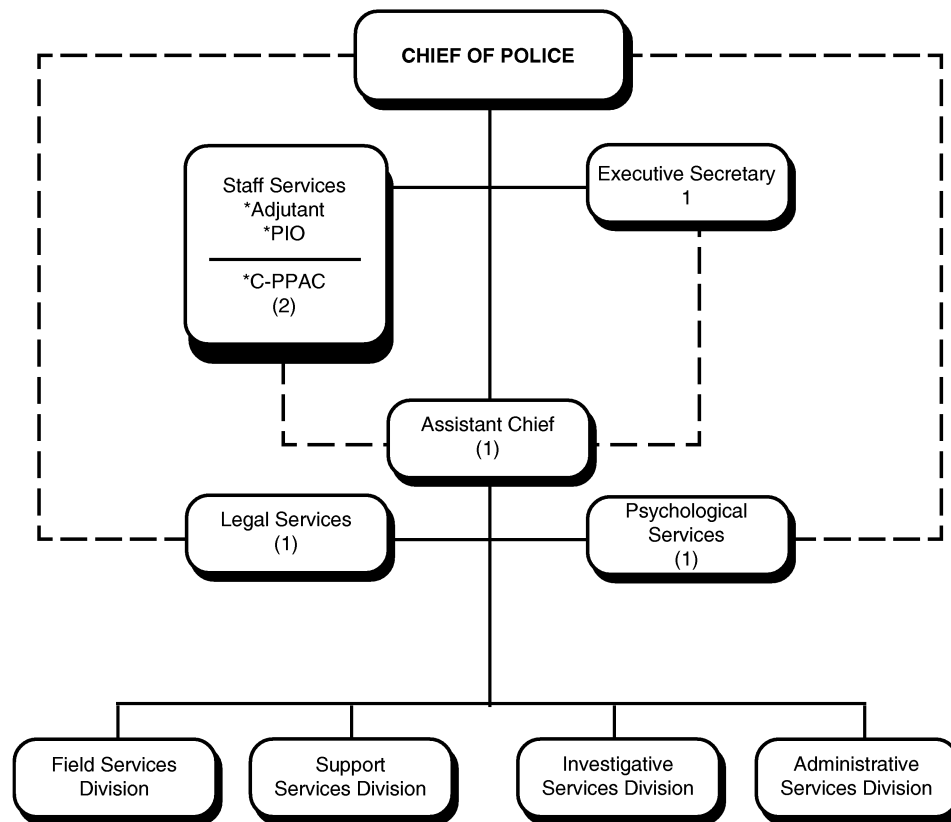


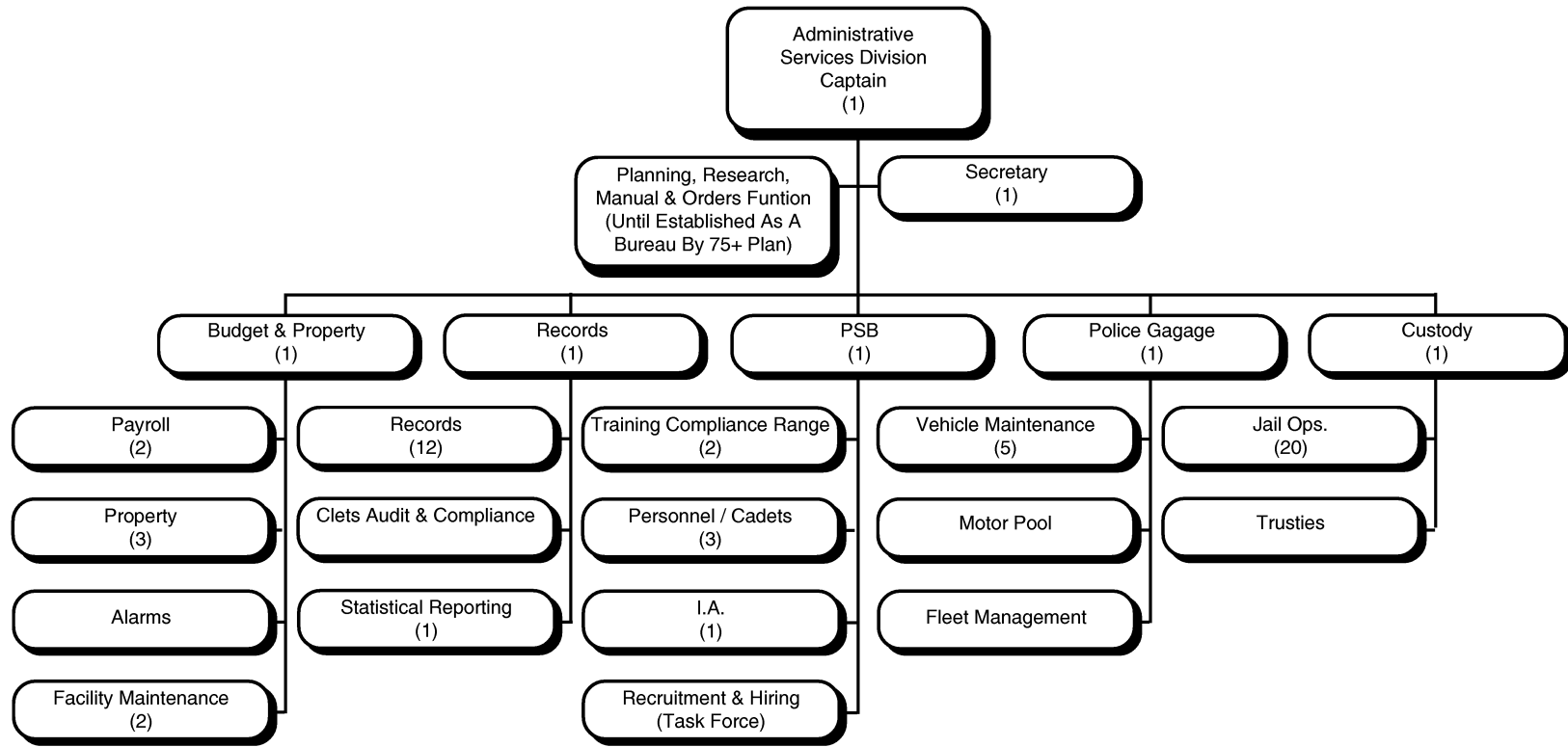
**GLENDALE POLICE DEPARTMENT**





1 Chief  
 1 Executive Secretary  
 1 PIO/C-PPAC  
 1 Psychological Service  
 58 Full-time Employees

1 Chief  
 1 Adjutant  
 1 Legal Services

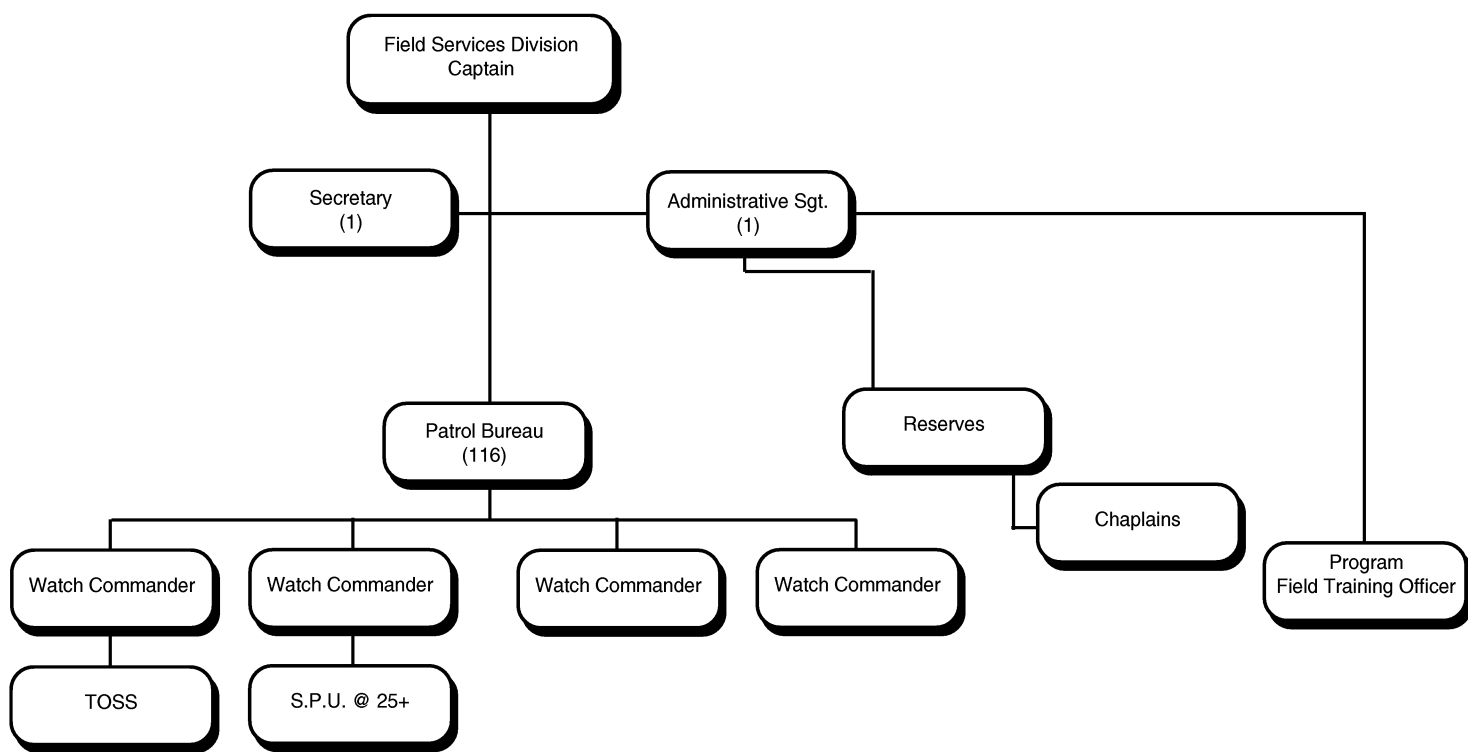


1 Captain  
 1 Admin. Assist.  
 2 CSO's Fac. Maint.  
 9 Rec's Specialist  
 3 Sgt's PSB  
 1 Equip. Supv.  
 1 Custody Admin.

1 Secretary  
 1 OSS II  
 1 Records Admin.  
 1 Admin. Analyst  
 2 OFC's PSB  
 3 Equip. Mech.  
 4 Shift Supv.

1 Budget Admin.  
 3 CSO's Property  
 3 Rec. Supv.  
 1 Lt. PSB  
 1 OSS II PSB Trng  
 2 Equip. Helpers  
 15 Custody CSO's

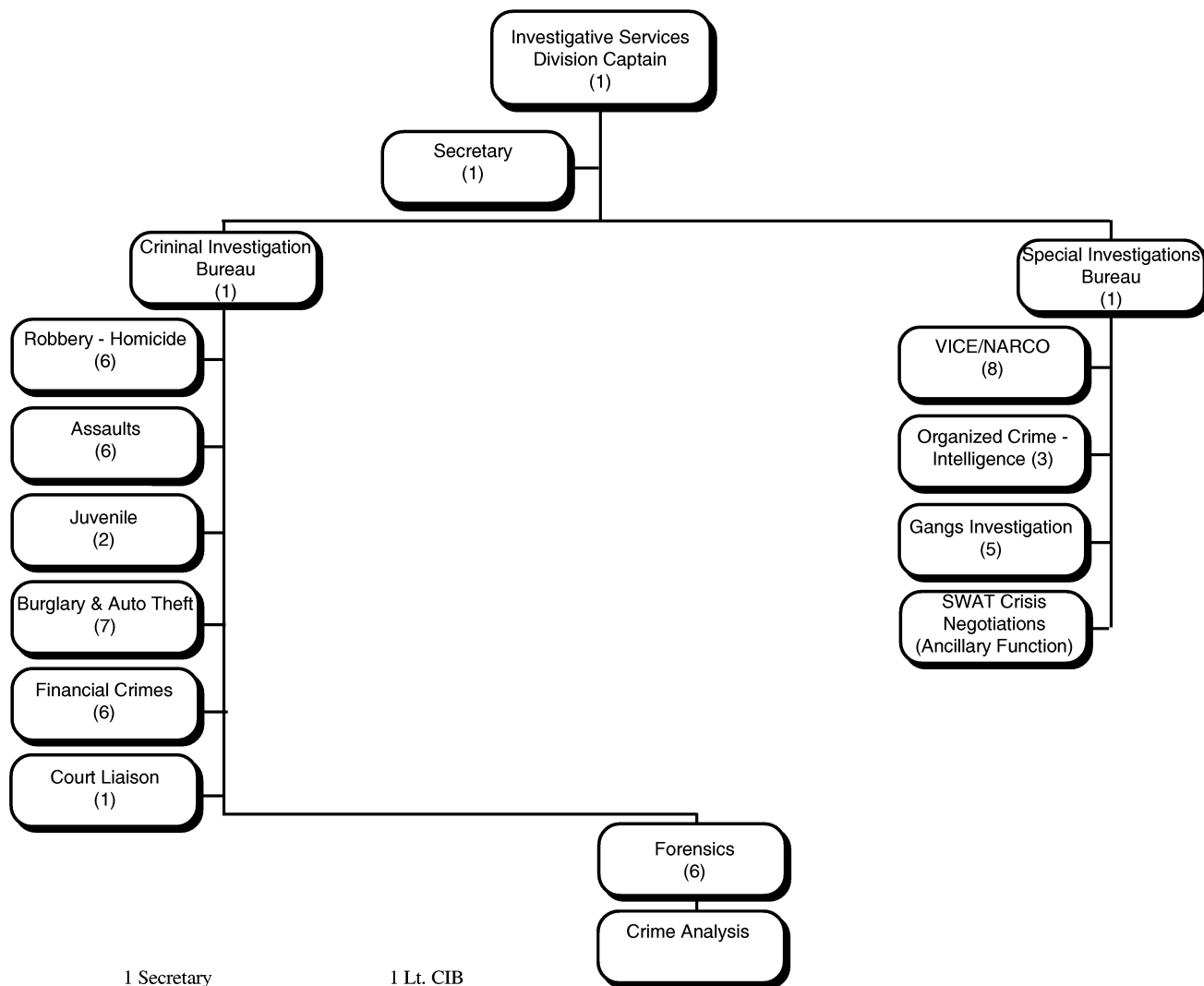
58 Full-time Employees



1 Captain  
 1 Admin. Sgt.  
 114 Ofc's Patrol

1 Secretary  
 4 Lt's Patrol  
 2 CSO Report Writing

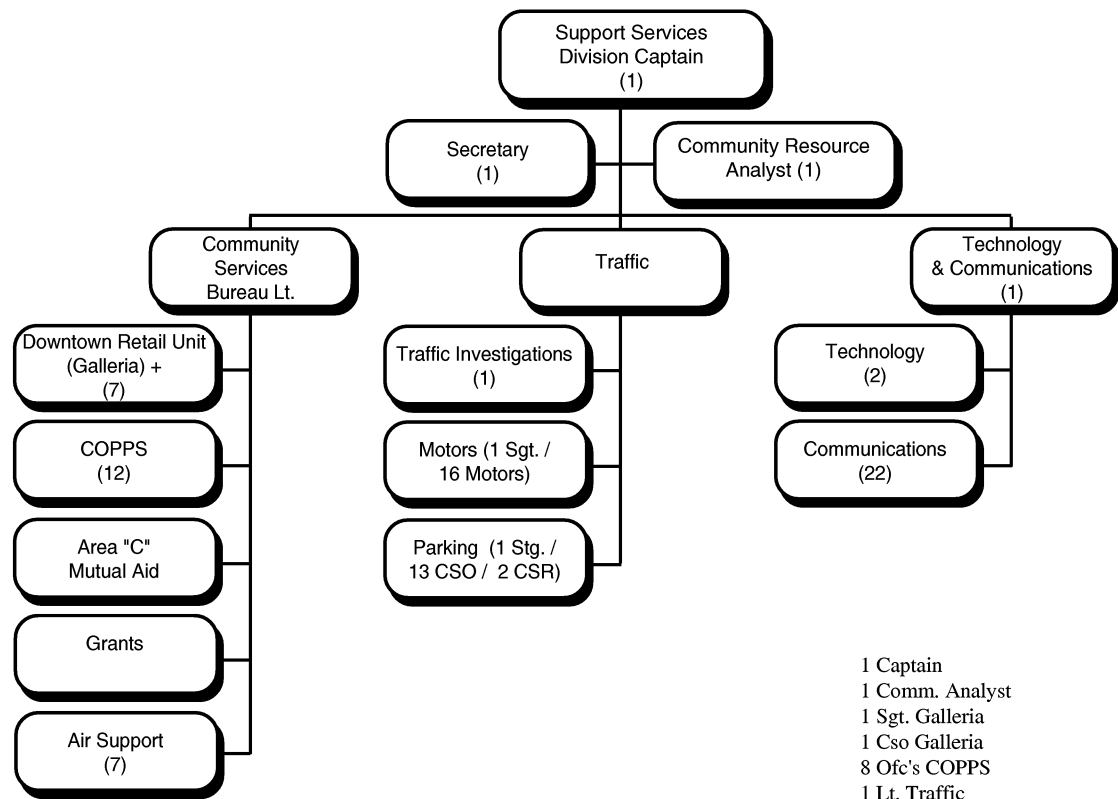
124 Full-time Employees



1 Captain  
 1 Sgt. RHD  
 1 Sgt. Fin. Crimes  
 1 Sgt. Assaults  
 1 Sgt Burg/Auto  
 5 For. Techs.  
 1 Sgt. VICE/NARCO  
 1 Sgt. OC/Intel  
 4 CSO Subpoena  
 4 OFC's Gangs

1 Secretary  
 5 OFC's RHD  
 5 OFC's Fin.Crimes  
 5 OFC's Assaults  
 6 OFC's Burg/Auto  
 2 Crime Anly. Vac.  
 7 OFC's VICE/NARCO  
 2 OFC's OC/Intel  
 2 Juvenile Crimes

1 Lt. CIB  
 1 CSO RHD  
 1 CSO Fin. Crimes  
 1 CSR  
 1 Supv. Forensics  
 1 Lt. SIB  
 1 CSO VICE/NARCO  
 1 Court Liaison  
 1 Sgt. Gangs



1 Captain  
 1 Comm. Analyst  
 1 Sgt. Galleria  
 1 Cso Galleria  
 8 Ofc's COPPS  
 1 Lt. Traffic  
 1 Sgt. Motors  
 1 Sgt. Pkg. Enf.  
 2 Csr Traffic  
 5 Ofc's A/S  
 1 Lt. Tech.  
 4 Comm. Supv.

1 Secretary  
 4 Lt. CSB (Vacant)  
 5 Ofc's Galleria  
 1 Sgt. COPPS  
 3 Cso's COPPS  
 1 Traffic Inv.  
 16 Motor Ofc's  
 12 Cso's Parking  
 1 Sgt. Air Support  
 1 Equip. Mech A/S  
 2 Info Tech.  
 18 Dispatchers

90 Full-time Employees