

**CITY OF GLENDALE, CALIFORNIA
REPORT TO THE:**

Joint City Council Housing Authority Successor Agency Oversight Board

April 10, 2018

AGENDA ITEM

Report: Glendale Train Station and Transportation Center 1st/Last Mile Regional Improvements
Projects Phase I and II

- 1) Resolution of Appropriation to appropriate funds

COUNCIL ACTION

Public Hearing Ordinance Consent Calendar Action Item Report Only

Approved for April 10, 2018 calendar

ADMINISTRATIVE ACTION

Signature

de Submitted by:
Roubik R. Golanian, P.E., Director of Public Works

Philip Lanzafame, Director of Community Development

Prepared by:
Fred Zohrehvand, Senior Planner

Sarkis Oganessian, P.E., Senior Civil Engineer

Approved by:
Yasmin K. Beers, City Manager

Reviewed by:
Kathryn Engel, Transit Manager

Michael J. Garcia, City Attorney

Robert P. Elliot, Director of Finance

[Handwritten signatures on lines]

MK

4 B /

RECOMMENDATION

Staff respectfully recommends that the City Council approve the following:

- 1) Resolution of Appropriation to appropriate funds in the following accounts and amounts:
 - a. Appropriate \$1,556,438 from the Local Grants, CIP Reimbursement Fund (34301-409) to Construction, CIP Reimbursement Fund, Public Works Projects, CFP: Train Station 1st/Last Mile Project (52100-409-501-G52104)
 - b. Appropriate \$1,101,000 from the Federal Grants, CIP Reimbursement Fund (31240-409) to Construction, CIP Reimbursement Fund, Public Works Projects, 1st/Last Mile Phase II Project (52100-409-501-G52176)
 - c. Appropriate \$200,000 from County Grants, CIP Reimbursement Fund (34050-409) to Construction, CIP Reimbursement Fund, Public Works Projects, TDA3-Bicycle and Pedestrian Fund (52100-409-501-G52050)

BACKGROUND/ANALYSIS

Glendale Train Station 1st/Last Mile Regional Improvements Phase I

The Community Development Department secured funds from the competitive Metro 2015 Call for Projects grant program. The award provides \$1,556,438 to improve conditions for transit riders in and around the Glendale Transportation Center (GTC), contingent on meeting Metro's Project Readiness requirements.

The recommended action will allow the City to meet these requirements by agreeing to the following:

- 1) Appropriately staff the project;
- 2) Complete work by the Project Lapse Date;
- 3) Allocate Metro 2015 Call for Projects grant funds in the amount of \$1,556,438; and
- 4) Utilize \$711,100 of local match funds from Measure M Local Return.

A funding agreement has been executed by Metro and the City for this grant.

Throughout the ongoing outreach process for the South Glendale Community Plan, beginning in October 2013 and last presented to the City Council on December 6, 2016, Tropic stakeholders have provided numerous comments regarding their desire for mobility and safety improvements in their neighborhood. This project's initial outreach effort received the 2014 Public Outreach Award of Merit from the American Planning Association - Los Angeles Chapter. In that same year, 2014, the Metro Board adopted both the *First Last Mile Strategic Plan & Planning Guidelines* and the *Metro Complete Streets Policy*. The Community Development Department recognized an opportunity to implement some of the community plan's draft recommendations consistent with Metro's new policies through the 2015 Metro Call for Projects, a competitive grant program that distributes discretionary funds to regionally significant projects.

The project will help make Cerritos Avenue a true gateway to the GTC by providing new shade trees, pedestrian lighting, and stormwater infiltration parkways along widened sidewalks. Improvements at GTC include new shelters for rail and bus patrons above existing benches that

will be illuminated using sustainable solar power; and an information kiosk for commuters. Other area improvements will bring new LED pedestrian lighting to San Fernando Road between Los Feliz Road and Brand Boulevard, and new full-featured bus shelters with benches, information kiosks, and trash receptacles. The project will implement a comprehensive neighborhood wayfinding program for drivers, bicyclists, and pedestrians noting distances to transit resources, bikeways, parks, schools, libraries, post offices, and other points of interest. Finally, pedestrians will see upgrades to existing crosswalks from standard to high-visibility markings along San Fernando Road between Los Feliz Road and Brand Boulevard; and the addition of new, high-visibility crosswalks at Gardena Avenue and Cerritos Avenue. (See Exhibit 1)

Glendale Transportation Center 1st/Last Mile Regional Improvements Phase II

The Community Development Department secured funds from the competitive 2017 Active Transportation Program (ATP) Augmentation fund program. The award provides \$1,101,000 to improve conditions around the GTC, connecting the disadvantaged Tropico neighborhood in Glendale with regional employment, medical, and retail destinations via new active transportation facilities, Metro Rapid/Local and Glendale Beeline transit systems, and Metrolink/Amtrak rail service.

The recommended action will allow the City to meet these requirements by agreeing to the following:

- 1) Appropriately staff the project;
- 2) Complete work by the Project Lapse Date; and
- 3) Allocate 2017 ATP Augmentation fund program funds in the amount of \$1,101,000, as well as \$200,000 of local match funds from the City's Transportation Development Act (TDA), Article III.

A funding allocation was submitted to California Transportation Commission (CTC) for this project.

The disadvantaged neighborhood around the GTC is vehicle-oriented and lacks adequate active transportation facilities. The project area includes a major regional hospital/health center; Metro rapid transit routes; 11,888 residents/square mile; nearly 8,000 jobs; and multiple modes of transportation, including bicycling and walking, despite the existing conditions.

Phase II of comprehensive "first/last mile" improvements around GTC includes Glendale's first protected bikeway, LED pedestrian lighting, wayfinding, shade trees, high-visibility crosswalks, accessibility features, and pedestrian signal improvements. GTC services include Metrolink/Amtrak rail, Metro and Glendale Beeline transit systems.

The GTC is at the heart of the transit oriented development (TOD) - focused Tropico Center Plan. The station is approximately 1/4 mile from a rapid transit hub at Los Feliz Road and San Fernando Road, with direct connectivity to Downtown Glendale and growing commercial/industrial/medical employment centers. These proposed improvements will implement the draft plan's recommendations to provide critical access for residents and regional commuters between residential and commercial destinations, and to improve facilities and wayfinding for bicyclists, pedestrians, and disabled persons in one of Glendale's highest-need and highest-potential neighborhoods.

This phase is located in the disadvantaged Tropico neighborhood around the Glendale Transportation Center (400 W Cerritos Ave.) in the southern portion of Glendale. The full project area is bounded by Los Feliz Road, San Fernando Road, Brand Boulevard, and westerly City Limits. (See Exhibit 2)

PROJECT SCHEDULE

Phase I:

Milestone	Begin	End	Duration
Design Engineering/PS&E	May 1, 2018	September 1, 2019	16 months
Advertise/Award Contract/Certification	January 22, 2020	May 22, 2020	4 months
Construction	July 1, 2020	March 29, 2021	8 months

Phase II:

Milestone	Begin	End	Duration
Project Approval & Environmental Document (PAED)	May 1, 2018	September 1, 2018	4 months
Design Engineering/Plans, Specs, & Estimate (PS&E)	October 1, 2018	October 1, 2019	12 months
Advertise/Award Contract/Certification	January 22, 2020	May 22, 2020	4 months
Construction	July 1, 2020	March 29, 2021	8 months

FISCAL IMPACT

Glendale Train Station 1st/last Mile Regional Improvements Phase I will be funded by Metro Call for Projects in the amount of \$1,556,438 with \$711,100 from Measure M Local Return as a local match.

Project Funding Phase I:

PROJECT ITEM	Grant funds (LACMTA)	Match Funds (LOCAL AGENCY)	TOTAL
Planning, Design, Engineering	\$129,578	\$59,311	\$188,889
Project Management/Contract Administration	\$65,385	\$29,929	\$95,314
Construction	\$1,295,779	\$593,111	\$1,888,890
Construction Engineering	\$65,696	\$28,749	\$94,445
TOTAL BUDGET COST	\$1,556,438	\$711,100	\$2,267,538

Glendale Transportation Center 1st/last Mile Regional Improvements Phase II will be funded by the 2017 ATP Augmentation Program for Project in the amount of \$1,101,000 and \$200,000 from Transportation Development Act (TDA) as a local match.

Project Funding Phase II:

PROJECT ITEM	Grant funds (ATP Funds)	Match Funds (LOCAL AGENCY)	TOTAL
E&P (PA&ED)	\$43,000	\$4,000	\$47,000
PS&E	\$129,000	\$13,000	\$142,000
Construction	929,000	\$183,000	\$1,112,000
TOTAL BUDGET COST	\$1,101,000	\$200,000	\$1,301,000

For the local agency match funds portion of Phase I, \$711,100 is currently appropriated in the Measure M Local Return Fund, CDD Projects, CFP: Train Station 1st/Last Mile Project (51200-222-180-52104).

Upon Council's approval, the following amounts will be appropriated as follows:

- a. Appropriate \$1,556,438 from the Local Grants, CIP Reimbursement Fund (34301-409) to Construction, CIP Reimbursement Fund, Public Works Projects, CFP: Train Station 1st/Last Mile Project (52100-409-501-G52104)
- b. Appropriate \$1,101,000 from the Federal Grants, CIP Reimbursement Fund (31240-409) to Construction, CIP Reimbursement Fund, Public Works Projects, 1st/Last Mile Phase II Project (52100-409-501-G52176)
- c. Appropriate \$200,000 from County Grants, CIP Reimbursement Fund (34050-409) to Construction, CIP Reimbursement Fund, Public Works Projects, TDA3-Bicycle and Pedestrian Fund (52100-409-501-G52050)

ALTERNATIVES

Alternative 1: Approve the attached Resolutions. Phase I and II of the 1st/Last Mile Regional Improvements Project will help improve all modes of transportation.

Alternative 2: Do not approve the attached Resolutions. Staff will relinquish funding received for improving all modes of transportation for Phase I and Phase II of the 1st/Last Mile Regional Improvements Project.

Alternative 3: The City Council may consider any other alternative not proposed by staff.

EXHIBITS

Exhibit 1: Phase I Project Location Map

Exhibit 2: Phase II Project Location Map

**RESOLUTION OF THE COUNCIL OF THE CITY OF GLENDALE
MAKING AN APPROPRIATION**

BE IT RESOLVED BY THE COUNCIL OF THE CITY OF GLENDALE:

SECTION 1: That the sum of \$2,857,438 is hereby appropriated and/or transferred from the following accounts to the following accounts:

ACCOUNTS	DESCRIPTION	FROM	TO
34301-409	Local Grants, CIP Reimbursement Fund	\$1,556,438	
52100-409-501-G52104	Construction, CIP Reimbursement Fund, Public Works Projects, CFP: Train Station 1 st /Last Mile Project		\$1,556,438
31240-409	Federal Grants, CIP Reimbursement Fund	\$1,101,000	
52100-409-501-G52176	Construction, CIP Reimbursement Fund, Public Works Projects, 1 st /Last Mile Phase II Project		\$1,101,000
34050-409	County Grants, CIP Reimbursement Fund	\$200,000	
52100-409-501-G52050	Construction, CIP Reimbursement Fund, Public Works Projects, TDA3 Project		\$200,000

To appropriate funding for the Glendale 1st/Last Mile Regional Improvements Phase I and Phase II projects

SECTION 2: The Director of Finance is authorized to make such other revisions, individual appropriation line-items, changes in summaries, fund totals, grand totals, and other portions of the budget document as necessary to reflect and implement the changes specified in this resolution.

SECTION 3: The City Clerk shall certify to the adoption of this Resolution.

Adopted this _____ day of _____, 2018.

Mayor

ATTEST:

City Clerk



CITY OF GLENDALE
DATE 3/26/2018
**APPROVED AS TO FINANCIAL
PROVISION FOR \$ 2,857,438**

STATE OF CALIFORNIA)
COUNTY OF LOS ANGELES) SS
CITY OF GLENDALE)

MK _____
Director of Finance

I, Ardashes Kassakhian, City Clerk of the City of Glendale, do hereby certify that the foregoing Resolution No. _____ was adopted by the Council of the City of Glendale, California, at a regular meeting held on the _____ day of _____, 2018, and that the same was adopted by the following vote:

Ayes:
Noes:
Absent:
Abstain:

APPROVED AS TO FORM
[Signature]

CITY ATTORNEY
DATE 3/15/18

City Clerk **4 B 1**

EXHIBIT 1 - PROJECT LOCATION MAP

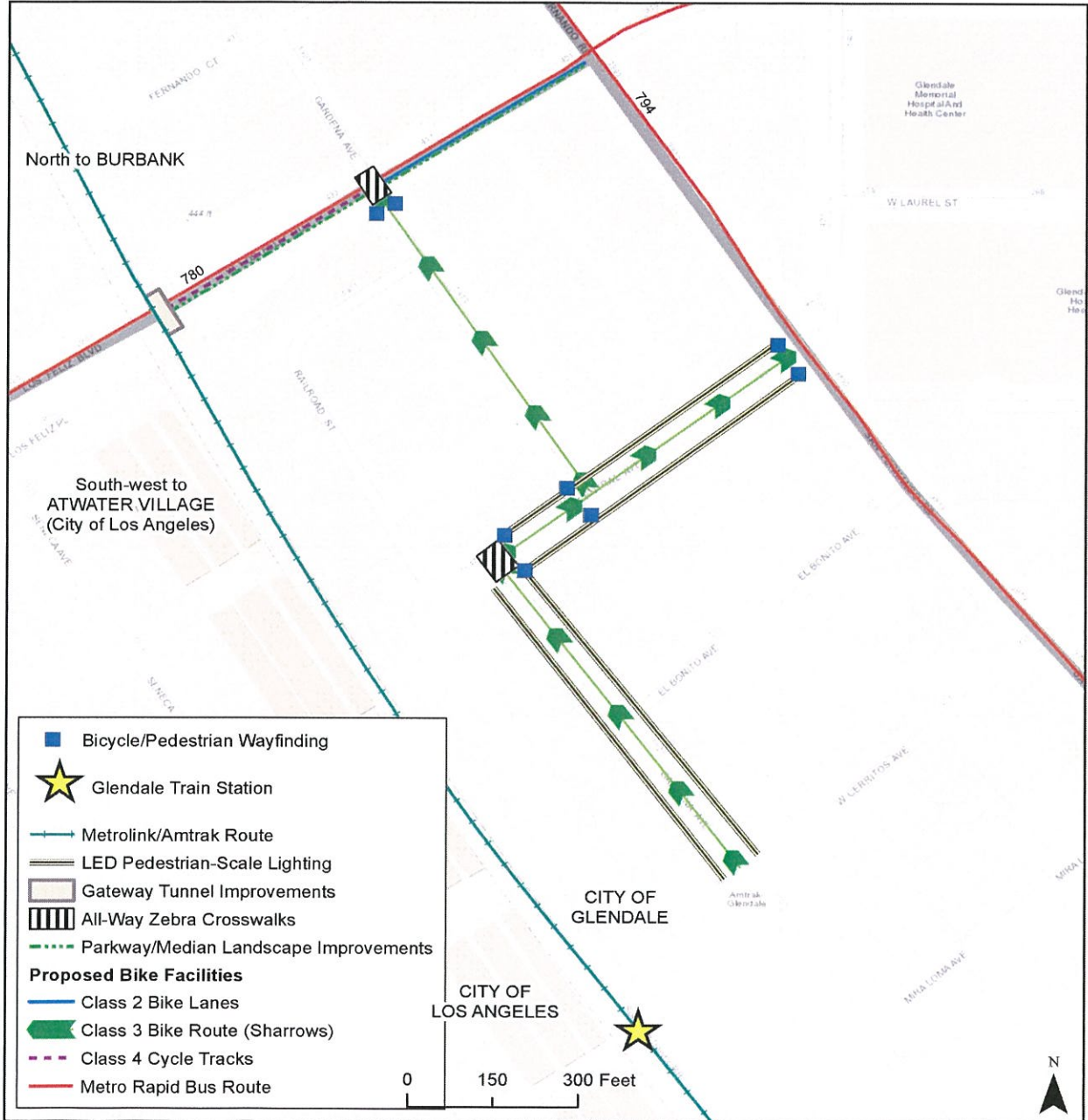
Glendale Train Station 1st/Last Mile Regional Improvements Revised Project Scope (Phase I)



EXHIBIT 2 – PROJECT LOCATION MAP

Glendale Train Station Regional 1st/Last Mile Improvements - Phase II

Phase II of a package of Glendale Train Station First/Last Mile improvements connecting Glendale to Los Angeles City, including new bicycle facilities, pedestrian lighting, wayfinding, landscaping, sidewalk widening, and high-visibility crosswalks.



THE LOCATIONS OF PROPOSED IMPROVEMENTS ARE ILLUSTRATIVE AND ARE NOT TO SCALE